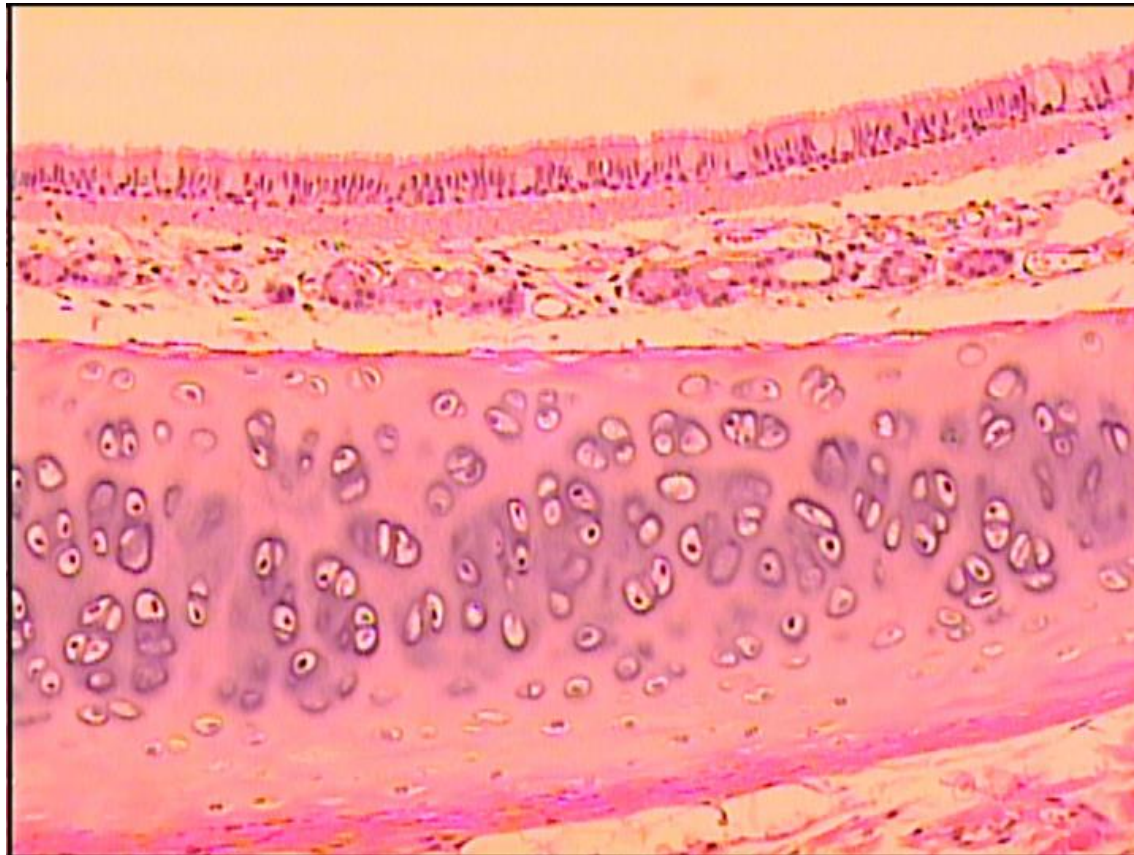


Trachea and Esophagus (low power)



Trachea (medium power)

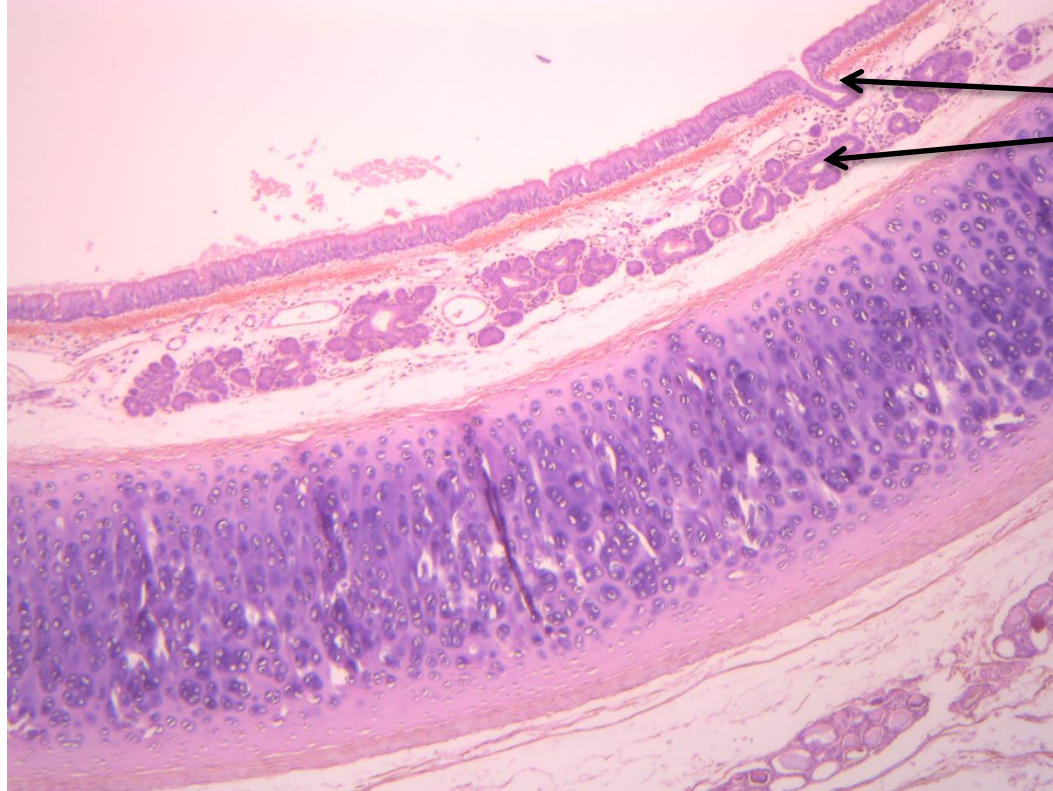


mucosa

submucosa

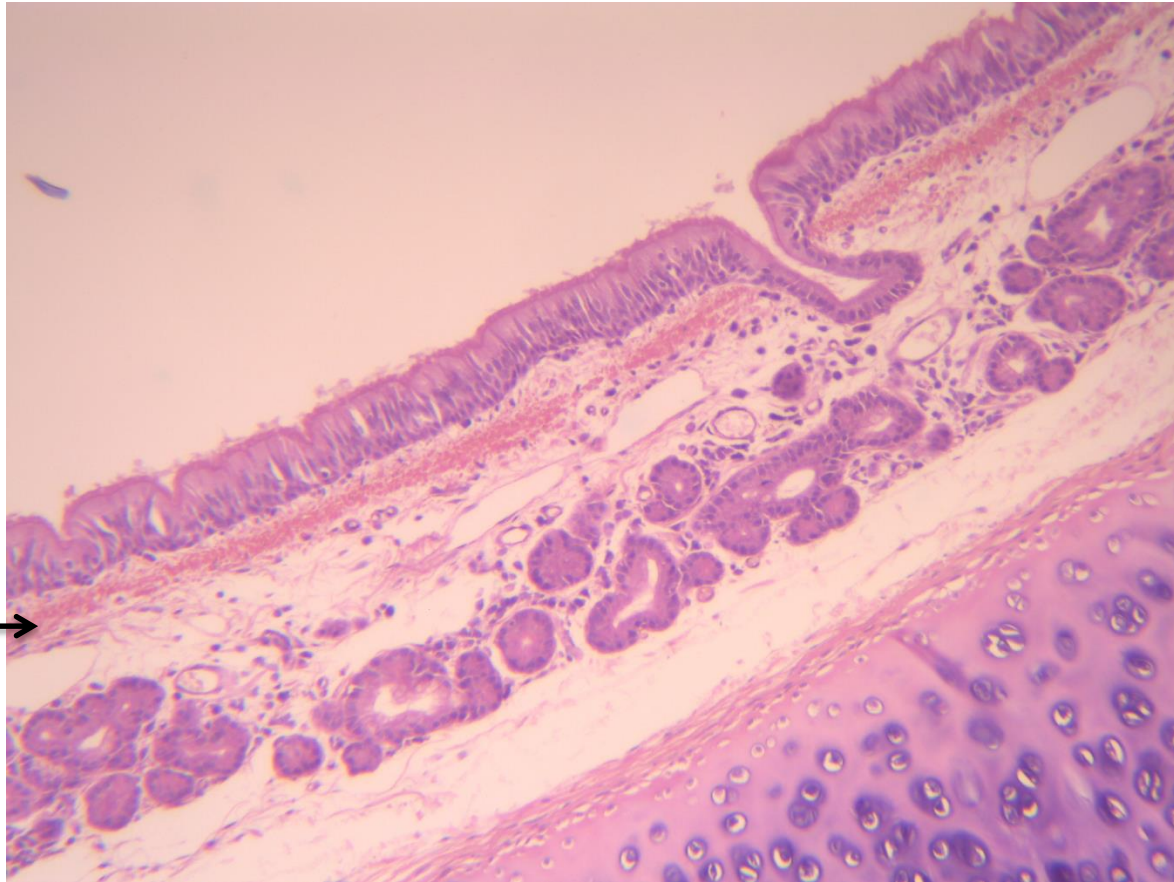
adventitia

Trachea (medium power)



Submucosal
glands

Trachea (high power)



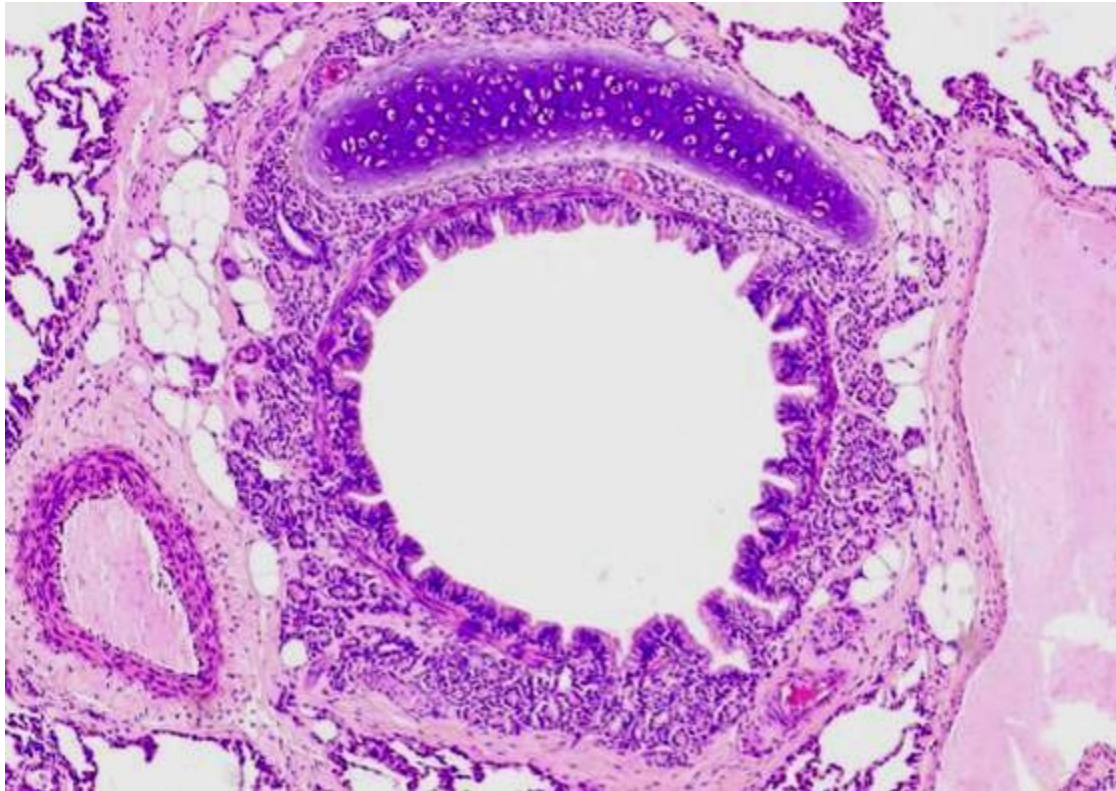
Lamina
propria



Submucosa
with glands



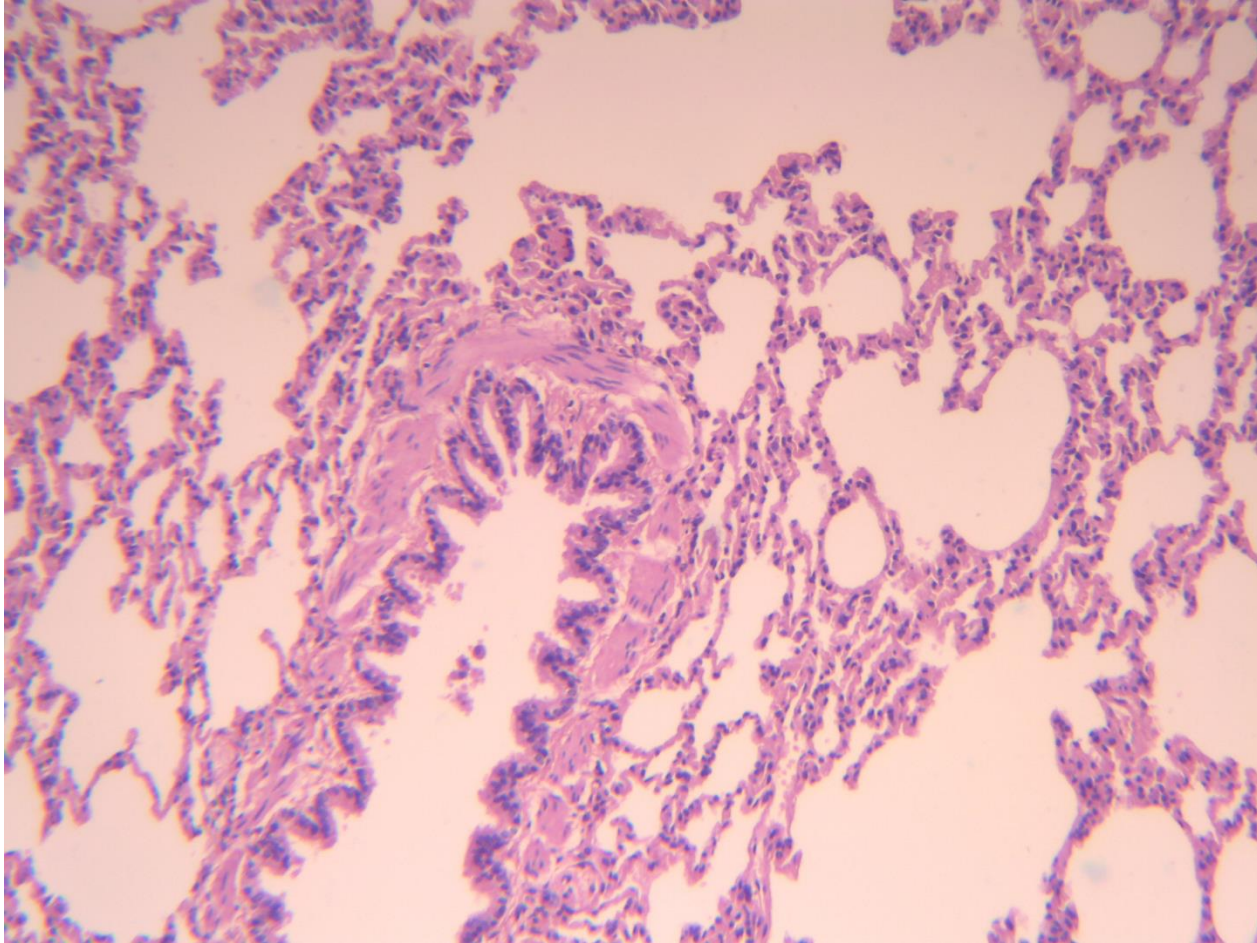
Bronchus



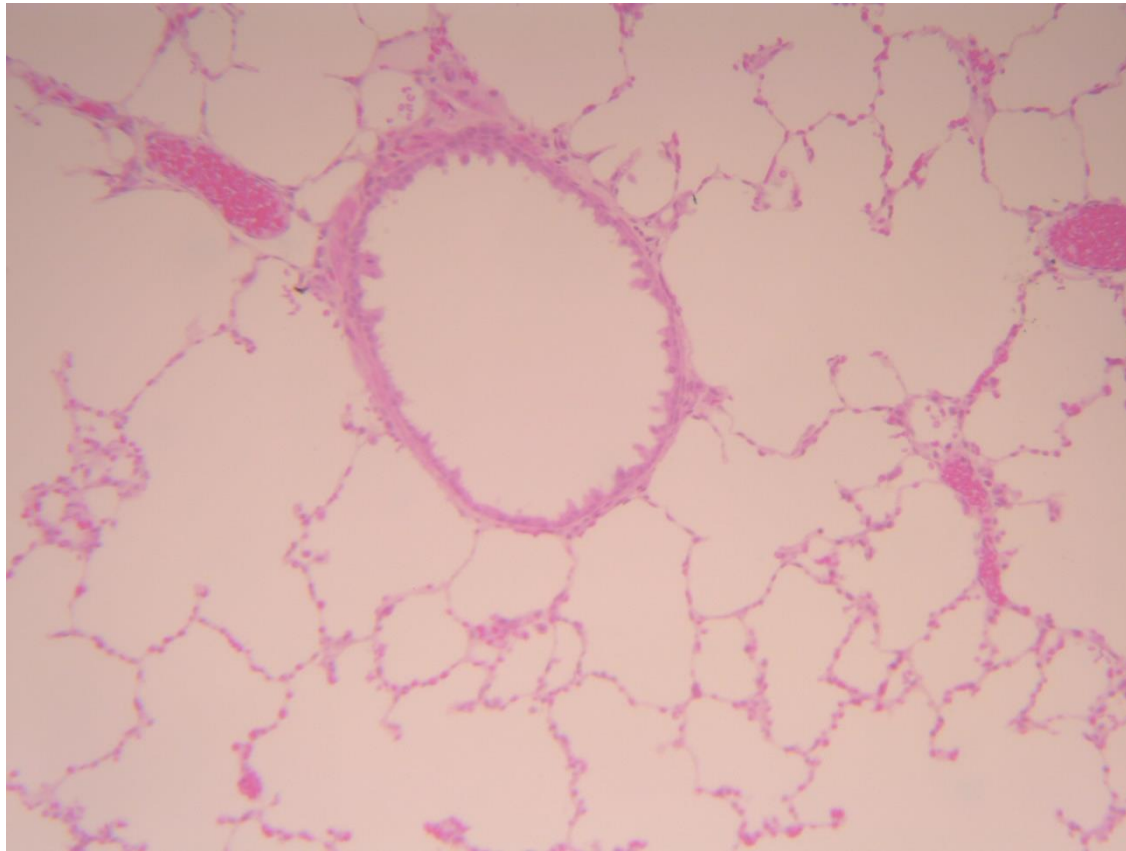
Bronchiole



Bronchiole (high power)



Bronchiole and alveoli (high power)



Bronchiole leading into alveoli

